



Maui Cabinets in Pebble Grey  
Island in Espresso



Catalina Cabinets  
in Slate

**NORTH  
POINT**  
CABINETS®

# Selection Guide



Catalina Cabinets  
in Slate



Catalina Cabinets  
in Polar White

# PREMIER COLLECTION



Catalina Cabinets in Polar White  
Island in Espresso

The Premier Collection features elegant upgrades like soft-close doors and drawers that won't slam when closed.

## Door Styles: Catalina, Maui

- High-quality wood construction
- Premium 100% water-based finishes
- Beautiful, finished interior
- 3/4" thick shelves



# ESSENTIALS COLLECTION

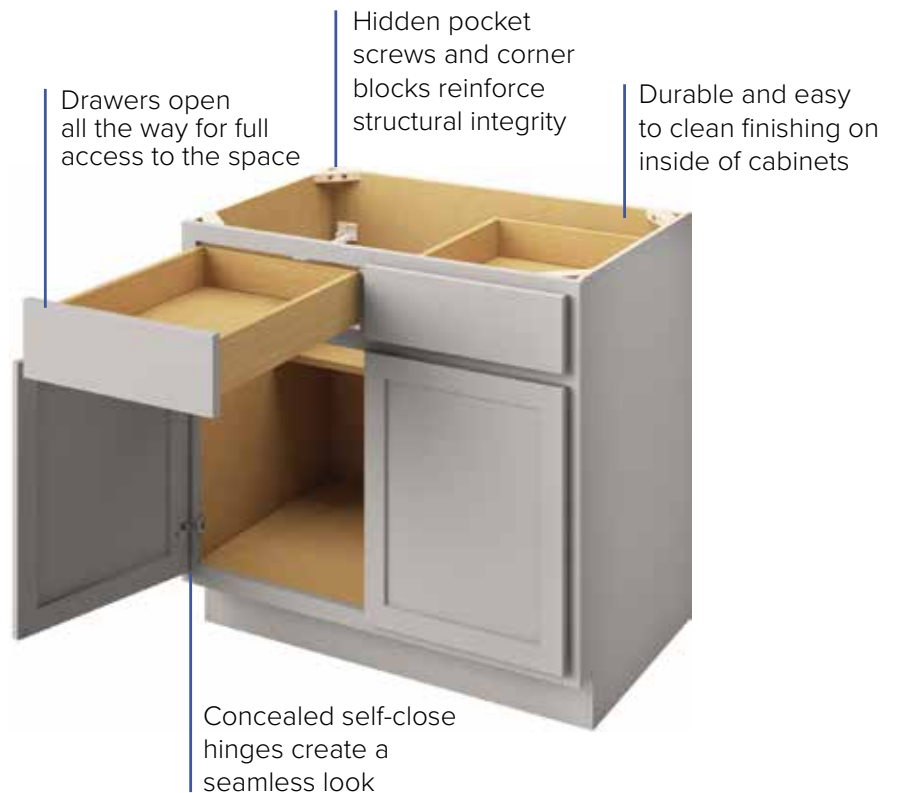


Hatteras Cabinets in Pebble Grey

The Essentials Collection features reliable hardware and sturdy construction that create a quality cabinet at a great value.

## Door Style: Hatteras

- High-quality wood construction
- Premium 100% water-based finishes
- Beautiful, finished interior
- 3/4" thick shelves



Drawers open all the way for full access to the space

Hidden pocket screws and corner blocks reinforce structural integrity

Durable and easy to clean finishing on inside of cabinets

Concealed self-close hinges create a seamless look

# Thoughtfully Designed, Carefully Crafted

---

NorthPoint Cabinetry features quality you can see and feel.



## Pretty on the Inside, Too

NorthPoint Cabinetry features a clean and beautifully finished birch interior that enhances the cabinet's luxurious, high-quality appeal. Meaningful yet hidden reinforcements — like solid wood corner blocks and strategically placed pocket screws — help reinforce the integrity and beauty of the cabinet.

## Premium Drawer Boxes

Dovetail joinery is the hallmark of high-quality drawer boxes. With a finished interior, 1/2" thick drawer bottom, solid hardwood material, and the silky-smooth glide of the concealed slides, you have a drawer box that will withstand all the demands of a bustling kitchen.



## Structural Integrity

These cleverly designed cabinets boast an innovative construction that provides robust quality. Shelves are constructed from an impressive 3/4" thick veneered plywood, preventing sagging over time under the weight of normal use. Take comfort that these well-constructed cabinets will stand the test of time.



Catalina Cabinets in Pebble Grey  
Island in Polar White



Catalina Cabinets in Polar White

# CATALINA

Premier Collection

More than modern – the Catalina design features a full-overlay Shaker style door and 5-piece drawer front. Create a classic kitchen that will stand the test of time. This on-trend cabinet style makes an instant impression but still has enduring appeal. Breathe fresh air into your space with the Catalina design.

## FINISHES



Polar White  
(Painted)



Pebble Grey  
(Painted)



Espresso  
(Stained)



Slate  
(Stained)





Maui Cabinets in Espresso  
Island in Polar White



Maui Cabinets in Polar White

# MAUI

Premier Collection

Sometimes the details make all the difference. The Maui design features a full-overlay transitional door and 5-piece drawer front with a twist of character. The door detail creates a graceful balance between traditional and contemporary for a timeless design. Add a hint of refined warmth and depth to your kitchen with the Maui design. It's sure to make your kitchen a conversation piece.

## FINISHES



Polar White  
(Painted)



Pebble Grey  
(Painted)



Espresso  
(Stained)



Slate  
(Stained)





Hatteras Cabinets in Espresso



Hatteras Cabinets in Polar White

# HATTERAS

Essentials Collection

Simple and Sleek. The Hatteras design features a partial-overlay, Shaker style door and slab drawer front with clean lines that are all the craze in contemporary kitchen design. Transform your space from modern to transitional by changing up the accessories and accents.

## FINISHES



Polar White  
(Painted)



Pebble Grey  
(Painted)



Espresso  
(Stained)



# The Finishing Touches

Complete your kitchen with Hardware Resources' other great products including cabinet knobs and pulls, cabinet organizers, LED lighting, hidden power strips, and kitchen and bar sinks. Ask your dealer for more details!

**hardware  
resources**

**TASK**  
lighting & power

**JEFFREY ALEXANDER**  
by Hardware Resources

**ELEMENTS**  
by Hardware Resources



**Ready to get started?**

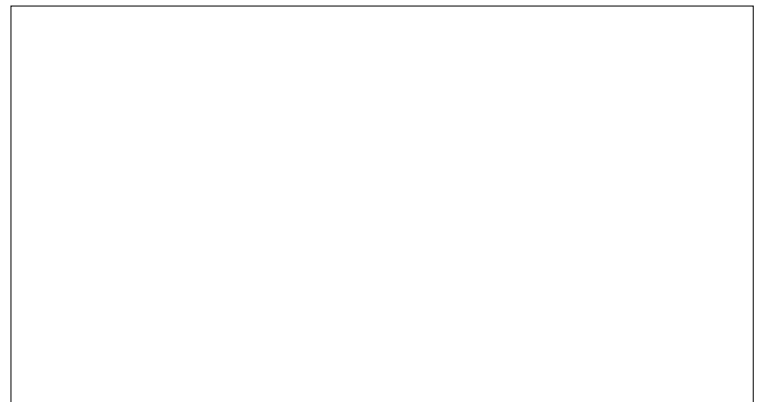
Ask your dealer for a quote today.

Find us on social media!



**NORTH  
POINT**  
CABINETRY® **hardware  
resources**

www.NorthPointCabinetry.com



CATCABHOME23-1